

HEARING NOTICE

PROPOSED CHANGES TO VOTING DISTRICTS

THE PHILADELPHIA COUNTY BOARD OF ELECTIONS
HAS PETITIONED THE COURT OF COMMON PLEAS TO
ALTER AND REVISE THE BOUNDARIES OF THE
FOLLOWING ELECTION DISTRICTS

WARD: 2ND

DIVISIONS: 15TH, 16TH, 25TH, 26TH, & 27TH

IN ACCORDANCE WITH THE ATTACHED PLAN, A HEARING
IS SCHEDULED FOR THIS PETITION AS FOLLOWS:

HEARING DATE: AUGUST 1, 2019

TIME: 9:30 A.M.

PLACE: CITY HALL COURTROOM 513

ANY PERSONS OBJECTING TO THESE CHANGES MUST
FILE THOSE OBJECTIONS WITH THE COURT OF
COMMON PLEAS PRIOR TO THE DATE OF THE HEARING

THESE DIVISIONS HAVE THE FOLLOWING NUMBERS OF ELECTORS
ENROLLED:

02-15 (876); 02-16 (911); 02-25 (969); 02-26 (1,215); 02-27 (1,244)

OFFICE OF THE CITY COMMISSIONERS
COUNTY BOARD OF ELECTIONS
215-686-3469

IN THE COURT OF COMMON PLEAS
CIVIL TRIAL DIVISION OF PHILADELPHIA COUNTY

Filed and Attested by the
Office of Judicial Records

09 JUL 2019 02:12 pm

IN RE PETITION OF PHILADELPHIA
COUNTY BOARD OF ELECTIONS

IN THE COURT OF COMMON PLEAS
OF PHILADELPHIA COUNTY

July Term, 2019

NO. 1707

RULE TO SHOW CAUSE

AND NOW, this 17 day of July, 2019, upon consideration of the Petition to redraw, revise, and modify the Election District boundaries of the 15th, 16th, 25th, 26th, and 27th Election Districts of the 2nd Ward and create the 28th and 29th Election Districts of the 2nd Ward filed by the Philadelphia County Board of Elections, pursuant to the Pennsylvania Election Code, 25 P.S. § 2704, a Rule is issued upon all interested parties to appear and show cause, why an Order should not be entered authorizing the modification and revisions requested within that Petition.

This Rule is Returnable on the 1 day of August 2019, at 9:30 AM/P.M. in Courtroom 513, City Hall, Philadelphia, Pennsylvania.

On the Return date, Petitioner shall provide an Affidavit of Service certifying that notice has been provided by mail or hand delivery to the Democratic and Republican Ward Leaders, Committee People, and the Election Boards, and by posting for the public at large. The notice shall include a brief statement of the division, re-division, alteration, formation or consolidation of Elections Districts recommended by the Philadelphia County Board of Elections, and the date upon which argument will be considered by this Court, along with a warning that any person objecting thereto must file written objections with the Office of Judicial Records at least 24 hours before the hearing date. Such notice must be posted for at least ten (10) days, in at least five (5) public and conspicuous places in the district or districts to be affected thereby; and at least one such notice shall be posted on or in the immediate vicinity of the polling place in the district.

Philadelphia Board Of Elections Vs Philadelp.Rt.EIS



1907017070005

BY THE COURT

IN THE COURT OF COMMON PLEAS
CIVIL TRIAL DIVISION OF PHILADELPHIA COUNTY

Filed and Attested by the
County of Judicial Records
09 JUL 2019 02:32 pm
P. SCHREIBER

IN RE PETITION OF PHILADELPHIA
COUNTY BOARD OF ELECTIONS

IN THE COURT OF COMMON PLEAS
OF PHILADELPHIA COUNTY

July Term, 2019

NO. 1707

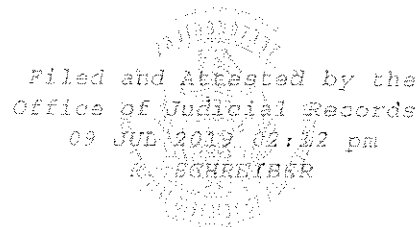
ORDER

AND NOW, this _____ day of _____, 2019, upon consideration of this
Petition, filed on _____ day of _____ 2019, the hearing held on the _____ day
of _____, 2019, where compliance with this Court's Rule to Show Cause having been
established by Affidavit of Service certifying that notice was provided as required, and there
being no objection,

IT IS HEREBY ORDERED, ADJUDGED, and DECREED that the Petition to redraw,
revise, and modify the Election District boundaries of the 15th, 16th, 25th, 26th, and 27th Election
Districts of the 2nd Ward and create the 28th and 29th Election Districts of the 2nd Ward, filed by
the Philadelphia County Board of Elections, pursuant to the Pennsylvania Election Code, 25 P.S.
§ 2704, is GRANTED, and that the boundary modifications and revisions of the 15th, 16th, 25th,
26th, and 27th Election Districts of the 2nd Ward be modified and revised and the 28th and 29th
Election Districts of the 2nd Ward be created, as per the Chart and attachments hereto.

BY THE COURT

CITY OF PHILADELPHIA LAW DEPARTMENT
MARCEL S. PRATT, CITY SOLICITOR
BY: Benjamin H. Field, Divisional Deputy City Solicitor
Attorney I.D. No. 204569
Michael Pfautz, Assistant City Solicitor
Attorney I.D. No. 325323
One Parkway Building, 15th Floor
1515 Arch Street
Philadelphia, PA 19102-1595
Tel (215) 683-5024 and Fax (215) 683-5299



Attorneys for Petitioner

IN RE PETITION OF PHILADELPHIA
COUNTY BOARD OF ELECTIONS

IN THE COURT OF COMMON PLEAS
OF PHILADELPHIA COUNTY

July Term, 2019
NO. 1707

**PETITION TO REDRAW, REVISE, AND MODIFY THE ELECTION DISTRICT
BOUNDARIES OF THE 15TH, 16TH, 25TH, 26TH, AND 27TH ELECTION DISTRICTS OF
THE 2ND WARD AND CREATE THE 28TH AND 29TH ELECTION DISTRICTS OF THE
2ND WARD**

Petitioner, the Philadelphia County Board of Elections, by and through its undersigned counsel, in accordance with 25 P.S. § 2704, petitions this Court for an order to redraw, revise, and modify the boundaries of the 15th, 16th, 25th, 26th, and 27th Election Districts of the 2nd Ward and create the 28th and 29th Election Districts of the 2nd Ward as set forth below:

1. The 15th, 16th, 25th, 26th, and 27th Election Districts of the 2nd Ward are located at the northeastern part of the 2nd Ward.
2. The 15th Election District of the 2nd Ward is bounded by Front Street, Christian Street, 4th Street, Carpenter Way, 5th Street, Queen Street, 3rd Street, Catharine Street, 2nd Street, and Queen Street. *See Exhibit A at 1-2.*

3. The 16th Election District of the 2nd Ward is bounded by Queen Street, 5th Street, Catharine Street, 6th Street, Fitzwater Street, Passyunk Avenue, Fitzwater Street, and 3rd Street.

See Exhibit A at 3-4

4. The 25th Election District of the 2nd Ward is bounded by Fitzwater Street, Passyunk Avenue, Fitzwater Street, 6th Street, Bainbridge Street, Marshall Street, Kater Street, 7th Street, South Street, 4th Street, Bainbridge Street, and 3rd Street. *See Exhibit A at 5-6.*

5. The 26th Election District of the 2nd Ward is bounded by Catharine Street, 3rd Street, Bainbridge Street, 4th Street, South Street, the Delaware Expressway, Bainbridge Street, and 2nd Street. *See Exhibit A at 7-8.*

6. The 27th Election District of the 2nd Ward is bounded by Christian Street, Front Street, Queen Street, 2nd Street, Bainbridge Street, the Delaware Expressway, South Street, and the Delaware River. *See Exhibit A at 9-10.*

7. During the 2019 Municipal Primary and Special Election, the 15th Election District of the 2nd Ward voted at St. Stanislaus Parish Hall located at 242 Fitzwater Street.

8. During the 2019 Municipal Primary and Special Election, the 16th Election District of the 2nd Ward voted at Settlement Music School (Curtis Branch) located at 416 Queen Street.

9. During the 2019 Municipal Primary and Special Election, the 25th Election District of the 2nd Ward voted at Settlement Music School (Curtis Branch) located at 416 Queen Street.

10. During the 2019 Municipal Primary and Special Election, the 26th Election District of the 2nd Ward voted at St. Stanislaus Parish Hall located at 242 Fitzwater Street.

11. During the 2019 Municipal Primary and Special Election, the 27th Election District of the 2nd Ward voted at St. Stanislaus Parish Hall located at 242 Fitzwater Street.

12. An influx of recent residential construction in these election districts has created an unusually high number of registered electors.

13. The 15th Election District of the 2nd Ward has 876 electors.

14. The 16th Election District of the 2nd Ward has 911 electors.

15. The 25th Election District of the 2nd Ward has 969 electors.

16. The 26th Election District of the 2nd Ward has 1,215 electors.

17. The 27th Election District of the 2nd Ward has 1,244 electors.

18. This high number of electors creates long waiting times at the polls on Election Day, an unnecessary burden to the electors.

19. According to the Pennsylvania Election Code, “[t]he county board of elections may . . . petition the court for the division or redivision of any . . . ward or election district into two or more election districts, or for the alteration of the bounds of any election district, or for the formation of one or more election districts out of two or more existing election districts, or parts thereof.” 25 P.S. § 2704.

20. The petition must include “a map and a verbal description of the boundaries of the proposed new election districts” and “a certification of the number of electors registered in each of the resulting election districts for the immediately preceding general or municipal election.” *Id.*

21. “Upon the presentation of any such petition by the county board, the court may make such order for the division, redivision, alteration, formation or consolidation of election

districts, as will, in its opinion, promote the convenience of electors and the public interests:

Provided [sufficient notice is provided].” *Id.*

22. Dividing the aforementioned election districts will alleviate unnecessary burdens for these electors.

23. The proposed modification for the 15th Election District of the 2nd Ward will consist of the following new boundaries: Christian Street, 4th Street, Carpenter Way, 5th Street, Queen Street, 3rd Street, Catharine Street, 2nd Street, and Moyamensing Avenue. *See Exhibits B, C.*

24. The proposed modification for the 16th Election District of the 2nd Ward will consist of the following new boundaries: Queen Street, 5th Street, Catharine Street, 6th Street, Fitzwater Street, Passyunk Avenue, Fitzwater Street, 4th Street, Catharine Street, and 3rd Street. *See Exhibits B, D.*

25. The proposed modification for the 25th Election District of the 2nd Ward will consist of the following new boundaries: Fitzwater Street, Passyunk Avenue, Fitzwater Street, 6th Street, Bainbridge Street, Marshall Street, Kater Street, 7th Street, South Street, and 4th Street. *See Exhibits B, E.*

26. The proposed modification for the 26th Election District of the 2nd Ward will consist of the following new boundaries: Monroe Street, 4th Street, South Street, and 2nd Street. *See Exhibits B, F.*

27. The proposed modification of the 27th Election District of the 2nd Ward will consist of the following new boundaries: Queen Street, 2nd Street, South Street, and Front Street. *See Exhibits G, H.*

28. The proposed creation for the 28th Election District of the 2nd Ward will consist of the following new boundaries: Christian Street, Moyamensing Avenue, 2nd Street, Queen Street, Front Street, South Street, and the Delaware River. *See* Exhibit G, I.

29. The proposed creation of the 29th Election District of the 2nd Ward will consist of the following new boundaries: Catharine Street, 4th Street, Monroe Street, and 2nd Street. *See* Exhibit B, J.

30. The tentative polling place location for the electors of the proposed 15th, 16th, 25th, and 28th Election Districts of the 2nd Ward will be Settlement Music School (Curtis Branch) located at 416 Queen Street.

31. The tentative polling place location for the electors of the proposed 26th, 27th, and 29th Election Districts of the 2nd Ward will be St. Stanislaus Parish Hall located at 242 Fitzwater Street.

WHEREFORE, the Philadelphia County Board of Elections request the Court to revise, redraw, and modify the boundaries of the 15th, 16th, 25th, 26th, and 27th Election Districts of the 2nd Ward and create the 28th and 29th Election Districts of the 2nd Ward according to the attached plan.

CITY OF PHILADELPHIA
LAW DEPARTMENT

DATED: July 9, 2019

BY: /s/ Benjamin H. Field
Divisional Deputy City Solicitor
Attorney I.D. No. 204569
Michael Pfautz, Assistant City Solicitor
Attorney I.D. No. 325323
1515 Arch Street, 15th Floor
Philadelphia, PA 19102
Phone: (215) 683-5024
Fax: (215) 683-5069
Benjamin.Field@phila.gov

Attorneys for Petitioner

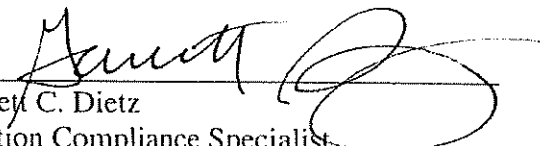
VERIFICATION

Filed and Attested by the
Office of Judicial Records
09 JUL 2019 02:42 pm
K. SCHREIBER

I, Garrett C. Dietz, for the Office of the City Commissioners, verify that the facts as set forth above are true and correct to the best of my knowledge, information and belief.

I understand that false statements made therein are subject to the penalties of 18 Pa. C.S. § 4904, relating to unsworn falsification to authorities.

DATED: July 5, 2019

BY: 
Garrett C. Dietz
Election Compliance Specialist
Office of the City Commissioners

Filed and Attested by the
Office of Judicial Records
09 JUL 2015 02:52 pm

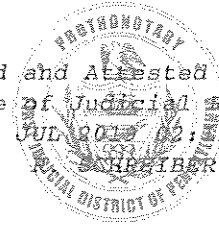
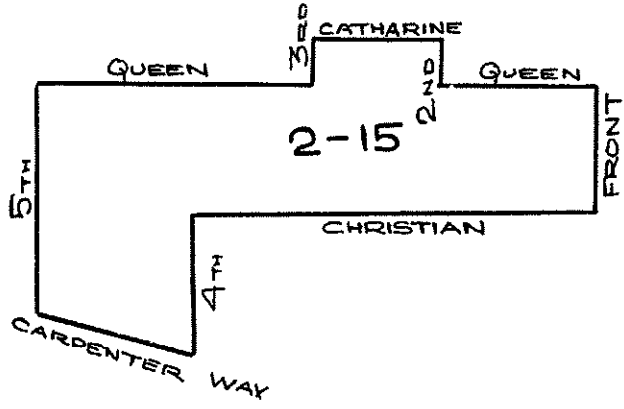


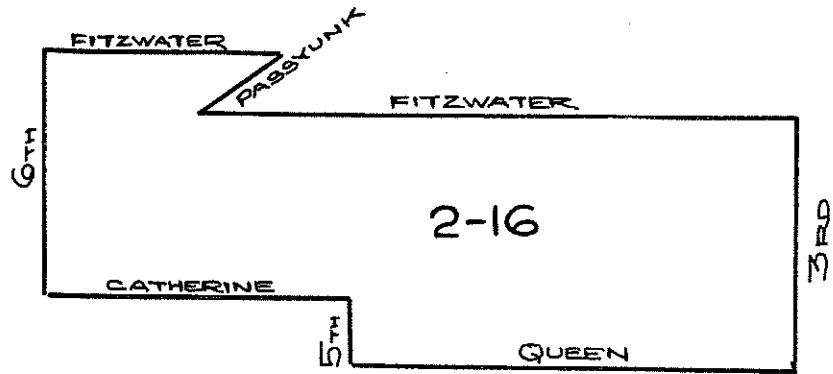
EXHIBIT "A"



The new 15th Election District of the 2nd Ward is bounded and described as follows:

BEGINNING at the intersection of the middle line of Front St. and the middle line of Christian St.; thence westward along the middle line of Christian to the middle line of 4th St.; thence southward along the middle line of 4th St. to the middle line of Carpenter Way; thence westward along the middle line of Carpenter Way to the middle line of 5th St.; thence northward along the middle line of 5th St. to the middle line of Queen St.; thence eastward along the middle line of Queen St. to the middle line of 3rd St.; thence northward along the middle line of 3rd St. to the middle line of Catharine St.; thence eastward along the middle line of Catharine St. to the middle line of 2nd St.; thence southward along the middle line of 2nd St. to the middle line of Queen St.; thence eastward along the middle line of Queen St. to the middle line of Front St.; thence southward along the middle line of Front St. to the middle line of Christian St., the first point and beginning.

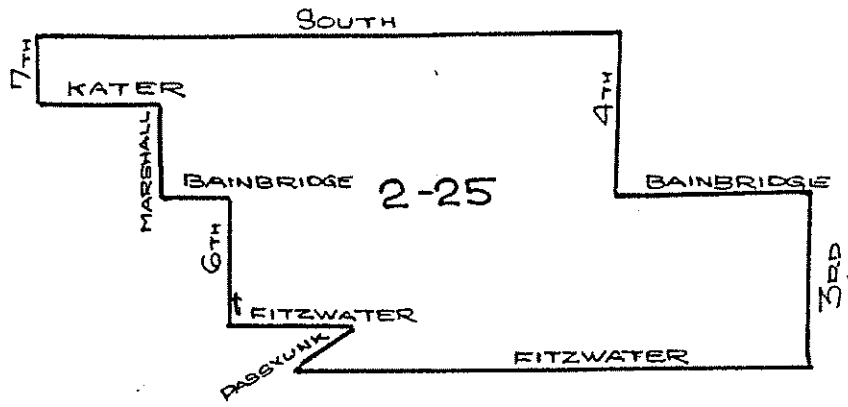
The new 15th Election District of the 2nd Ward will have approximately 695 electors.



The new 16th. Election District of the 2nd Ward is bounded and described as follows:

BEGINNING at the intersection of the middle line of 3rd. St. and the middle line of Queen St., thence westward along the middle line of Queen St. to the middle line of 5th. st., thence northward along the middle line of 5th. St. to the middle line of Catherine St., thence westward along the middle line of Catherine St. to the middle line of 6th. st., thence northward along the middle line of 6th. St. to the middle line of Fitzwater St., thence eastward along the middle line of Fitzwater St. to the middle line of Passyunk Ave., thence southward along the middle line of Passyunk Ave. to the middle line of Fitzwater St. to the middle line of 3rd. St., thence southward along the middle line of 3rd. St. to the middle line of Queen St. to the first point and beginning.

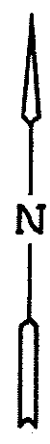
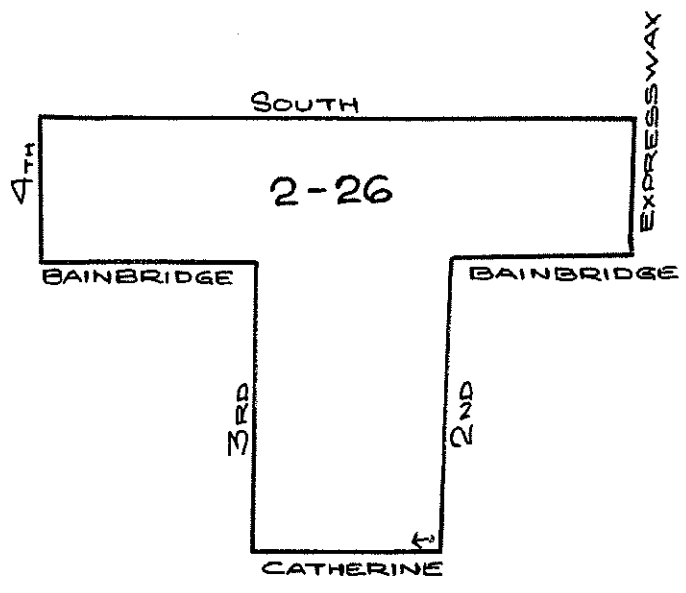
The new 16th. Election District of the 2nd. Ward will have approximately 587 electors.



The new 25th. Election District of the 2nd. Ward is bounded and described as follows:

BEGINNING at the intersection of the middle line of 6th. St. and the middle line of Fitzwater St., thence northward along the middle line of 6th. St. to the middle line of Bainbridge St., thence westward along the middle line of Bainbridge St. to the middle line of Marshall St, thence northward along the middle line of Marshall St. to the middle line of Kater St., thence westward along the middle line of Kater St. to the middle line of 7th. St., thence northward along the middle line of 7th. St. to the middle line of South St., thence eastward along the middle line of South St. to the middle line of 4th. St., then southward along the middle line of 4th St. to the middle line of Bainbridge St., thence eastward along the middle line of Bainbridge St. to the middle line of 3rd. St., thence southward along the middle line of 3rd. St. to the middle line of Fitzwater St., thence westward along the middle line of Fitzwater St. to the middle line of Passyunk Ave., thence northeastward along the middle line of Passyunk Ave. to the middle line of Fitzwater St., thence westward along the middle line of Fitzwater St. to the first point and beginning.

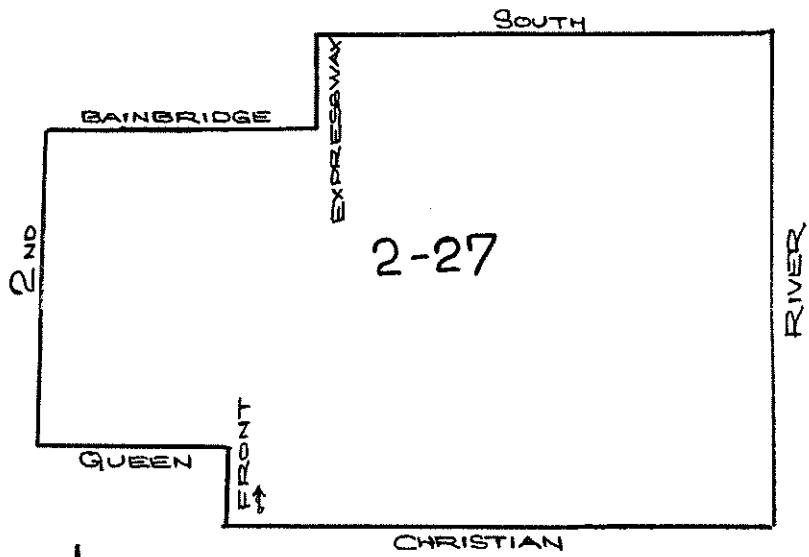
The new 25th. Election District of the 2nd. Ward will have approximately 562 electors



The new 26th. Election District of the 2nd. Ward is bounded and described as follows:

BEGINNING at the intersection of the middle line of 2nd. St. and the middle line of Catherine St., thence westward along the middle line of Catherine St. to the middle line of 3rd. St., thence northward along the middle line of 3rd. St. to the middle line of Bainbridge St., thence westward along the middle line of Bainbridge St. to the middle line of 4th. St., thence northward along the middle line of 4th. St. to the middle line of South St., thence eastward along the middle line of South St. to the middle line of the expressway thence southward along the middle line of the expressway to the middle line of Bainbridge St., thence westward along the middle line of Bainbridge St. to the middle line of 2nd. St., thence southward along the middle line of 2nd. St. to the middle line of Catherine to the first point and beginning.

The new 26th. Election District of the 2nd. Ward will have approximately 655 electors.



The new 27th. Election District of the 2nd. Ward is bounded and described as follows:

BEGINNING at the intersection of the middle line of Front St. and the middle line of Christian St., thence northward along the middle line of Front St. to the middle line of Queen St., thence westward along the middle line of Queen St. to the middle line of 2nd. St., thence northward along the middle line of 2nd. St. to the middle line of Bainbridge St., thence eastward along the middle line of Bainbridge St. to the middle line of the expressway thence northward along the middle line of the expressway to the middle line of South St., thence eastward along the middle line of South St. to the middle line of the Delaware River thence southward along the middle line of the Delaware River to the middle line of Christian St., thence westward along the middle line of Christian St. to the middle line of Front St. to the first point and beginning.

The new 27th. Election District of the 2nd. Ward will have approximately 563 electors.

EXHIBIT “B”

South St

7th St

Kater St

Marshall St

Bainbridge St

02-25

4th St

02-26

Fitzwater St

Monroe St

6th St

Passyunk Ave

02-16

02-29

N



Catharine St

Catharine St

2nd St

Queen St

3rd St

02-15

5th St

4th St

Christian St

Carpenter Way

Case ID: 190701707

Control No.: 19071525

EXHIBIT “C”

The new 15th Election District of the 2nd Ward is bounded and described as follows:

Beginning at the intersection of the middle line of Moyamensing Avenue and the middle line of Christian Street; thence westward along the middle line of Christian Street to the middle line of 4th Street; thence southward along the middle line of 4th Street to the middle line of Carpenter Way; thence westward along the middle line of Carpenter Way to the middle line of 5th Street; thence northward along the middle line of 5th Street to the middle line of Queen Street; thence eastward along the middle line of Queen Street to the middle line of 3rd Street; thence northward along the middle line of 3rd Street to the middle line of Catharine Street; thence eastward along the middle line of Catharine Street to the middle line of 2nd Street; thence southward along the middle line of 2nd Street to the middle line of Moyamensing Avenue; thence southwestward along the middle line of Moyamensing Avenue to the middle line of Christian Street, the first point and beginning.

PROPOSED WRITTEN DESCRIPTION

EXHIBIT “D”

The new 16th Election District of the 2nd Ward is bounded and described as follows:

Beginning at the intersection of the middle line of 3rd Street and the middle line of Queen Street; thence westward along the middle line of Queen Street to the middle line of 5th Street; thence northward along the middle line of 5th Street to the middle line of Catharine Street; thence westward along the middle line of Catharine Street to the middle line of 6th Street; thence northward along the middle line of 6th Street to the middle line of Fitzwater Street; thence eastward along the middle line of Fitzwater Street to the middle line of Passyunk Avenue; thence southwestward along the middle line of Passyunk Avenue to the middle line of Fitzwater Street; thence eastward along the middle line of Fitzwater Street to the middle line of 4th Street; thence southward along the middle line of 4th Street to the middle line of Catharine Street; thence eastward along the middle line of Catharine Street to the middle line of 3rd Street; thence southward along the middle line of 3rd Street to the middle line of Queen Street, the first point and beginning.

PROPOSED WRITTEN DESCRIPTION

EXHIBIT “E”

The new 25th Election District of the 2nd Ward is bounded and described as follows:

Beginning at the intersection of the middle line of 6th Street and the middle line of Fitzwater Street; thence northward along the middle line of 6th Street to the middle line of Bainbridge Street; thence westward along the middle line of Bainbridge Street to the middle line of Marshall Street; thence northward along the middle line of Marshall Street to the middle line of Kater Street; thence westward along the middle line of Kater Street to the middle line of 7th Street; thence northward along the middle line of 7th Street to the middle line of South Street; thence eastward along the middle line of South Street to the middle line of 4th Street; thence southward along the middle line of 4th Street to the middle line of Fitzwater Street; thence westward along the middle line of Fitzwater Street to the middle line of Passyunk Avenue; thence northeastward along the middle line of Passyunk Avenue to the middle line of Fitzwater Street; thence westward along the middle line of Fitzwater Street to the middle line of 6th Street, the first point and beginning.

PROPOSED WRITTEN DESCRIPTION

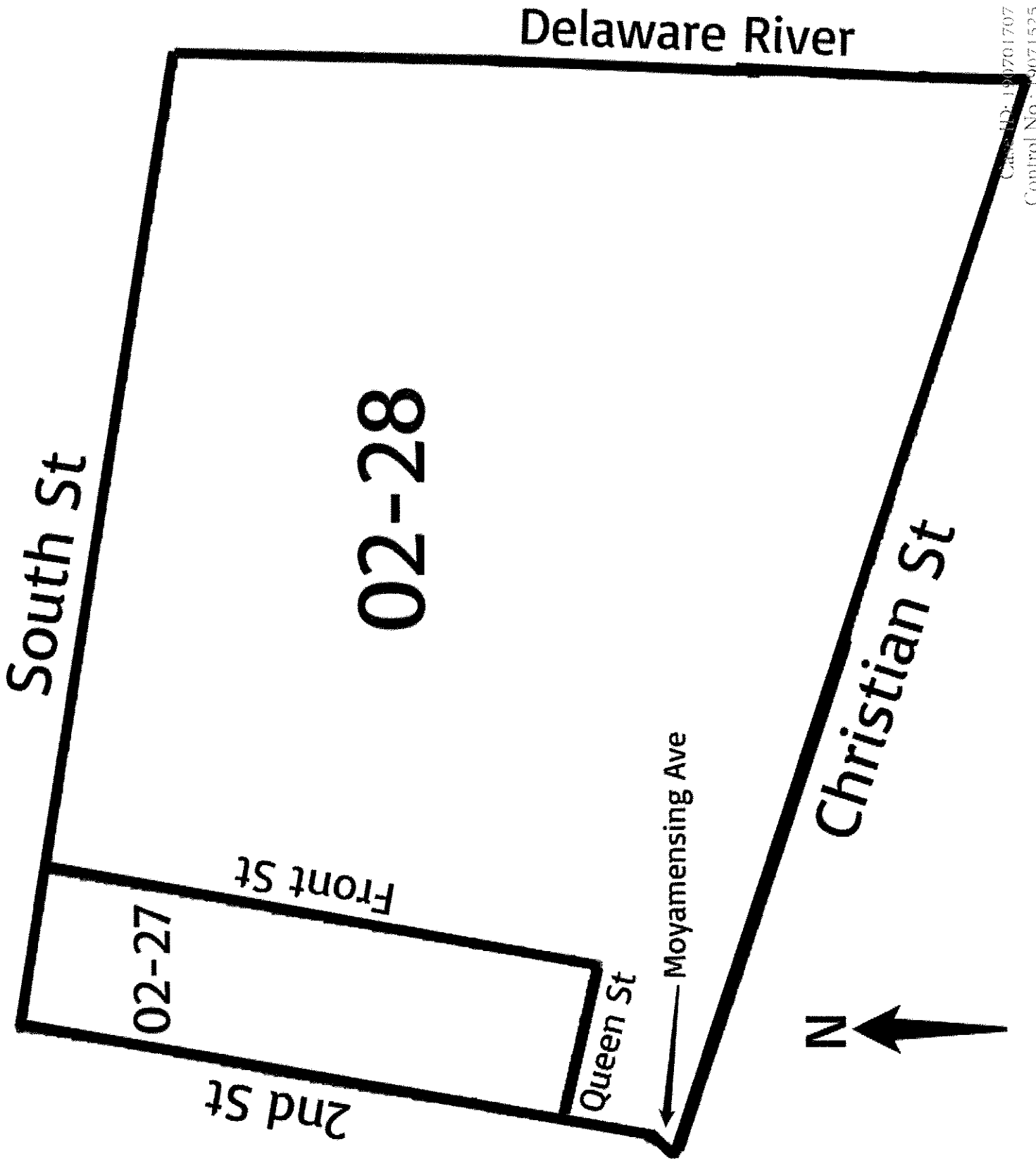
EXHIBIT “F”

The new 26th Election District of the 2nd Ward is bounded and described as follows:

Beginning at the intersection of the middle line of 2nd Street and the middle line of Monroe Street; thence westward along the middle line of Monroe Street to the middle line of 4th Street; thence northward along the middle line of 4th Street to the middle line of South Street; thence eastward along the middle line of South Street to the middle line of 2nd Street; thence southward along the middle line of 2nd Street to the middle line of Monroe Street, the first point and beginning.

PROPOSED WRITTEN DESCRIPTION

EXHIBIT “G”



Case ID: 190701707
Control No.: 19071525

EXHIBIT “H”

The new 27th Election District of the 2nd Ward is bounded and described as follows:

Beginning at the intersection of the middle line of Front Street and the middle line of Queen Street; thence westward along the middle line of Queen Street to the middle line of 2nd Street; thence northward along the middle line of 2nd Street to the middle line of South Street; thence eastward along the middle line of South Street to the middle line of Front Street; thence southward along the middle line of Front Street to the middle line of Queen Street, the first point and beginning.

PROPOSED WRITTEN DESCRIPTION

EXHIBIT “I”

The new 28th Election District of the 2nd Ward is bounded and described as follows:

Beginning at the intersection of the middle line of Moyamensing Avenue and the middle line of Christian Street; thence northeastward along the middle line of Moyamensing Avenue to the middle line of 2nd Street; thence northward along the middle line of 2nd Street to the middle line of Queen Street; thence eastward along the middle line of Queen Street to the middle line of Front Street; thence northward along the middle line of Front Street to the middle line of South Street; thence eastward along the middle line of South Street and an imaginary continuance of the middle line of South Street to the middle line of the Delaware River; thence southward along the middle line of the Delaware River to an imaginary continuation of the middle line of Christian Street; thence westward along the imaginary continuation of the middle line of Christian Street and continuing along the middle line of Christian Street to the middle line of Moyamensing Avenue, the first point and beginning.

PROPOSED WRITTEN DESCRIPTION

EXHIBIT “J”

The new 29th Election District of the 2nd Ward is bounded and described as follows:

Beginning at the intersection of the middle line of 2nd Street and the middle line of Catharine Street; thence westward along the middle line of Catharine Street to the middle line of 4th Street; thence northward along the middle line of 4th Street to the middle line of Monroe Street; thence eastward along the middle line of Monroe Street to the middle line of 2nd Street; thence southward along the middle line of 2nd Street to the middle line of Catharine Street, the first point and beginning.

PROPOSED WRITTEN DESCRIPTION