

HEARING NOTICE

PROPOSED CHANGES TO VOTING DISTRICTS

THE PHILADELPHIA COUNTY BOARD OF ELECTIONS
HAS PETITIONED THE COURT OF COMMON PLEAS TO
ALTER AND REVISE THE BOUNDARIES OF THE
FOLLOWING ELECTION DISTRICTS

WARD: 8TH

DIVISIONS: 5TH, 14TH, 15TH, 20TH, 24TH, 26TH

IN ACCORDANCE WITH THE ATTACHED PLAN, A HEARING
IS SCHEDULED FOR THIS PETITION AS FOLLOWS:

HEARING DATE: AUGUST 1, 2019

TIME: 9:30 A.M.

PLACE: CITY HALL COURTROOM 513

ANY PERSONS OBJECTING TO THESE CHANGES MUST
FILE THOSE OBJECTIONS WITH THE COURT OF
COMMON PLEAS PRIOR TO THE DATE OF THE HEARING

THESE DIVISIONS HAVE THE FOLLOWING NUMBER OF ELECTORS
ENROLLED:

08-05 (1,742); 08-14 (1,457); 08-15 (1,744); 08-16 (577); 08-20 (779);
08-24 (1,670); 08-26 (1,711)

OFFICE OF THE CITY COMMISSIONERS
COUNTY BOARD OF ELECTIONS
215-686-3469

IN THE COURT OF COMMON PLEAS
CIVIL TRIAL DIVISION OF PHILADELPHIA COUNTY

Filed and Attested by the
Office of Judicial Records

08 JUL 2019 03:14 pm

IN RE PETITION OF PHILADELPHIA
COUNTY BOARD OF ELECTIONS

IN THE COURT OF COMMON PLEAS
OF PHILADELPHIA COUNTY

July Term, 2019

NO. 201710

RULE TO SHOW CAUSE

AND NOW, this 17 day of July, 2019, upon consideration of the Petition to redraw, revise and modify the Election District boundaries of the 5th, 14th, 15th, 20th, 24th, and 26th Election Districts of the 8th Ward and create the 31st, 32nd, 33rd, 34th, and 35th Election District of the 8th Ward filed by the Philadelphia County Board of Elections, pursuant to the Pennsylvania Election Code, 25 P.S. § 2704, a Rule is issued upon all interested parties to appear and show cause, why an Order should not be entered authorizing the modification and revisions requested within that Petition.

This Rule is Returnable on the 1 day of August, 2019, at 9:30 A.M./P.M. in Courtroom 513, City Hall, Philadelphia, Pennsylvania.

On the Return dates, Petitioner shall provide an Affidavit of Service certifying that notice has been provided by mail or hand delivery to the Democratic and Republican Ward Leaders, Committee People, and the Election Boards, and by posting for the public at large. The notice shall include a brief statement of the division, re-division, alteration, formation or consolidation of Election Districts recommended by the Philadelphia County Board of Elections, and the date upon which argument will be considered by this Court, along with a warning that any person objecting thereto must file written objections with the Office of Judicial Records at least 24 hours before the hearing date. Such notice must be posted for at least ten (10) days, in at least five (5) public and conspicuous places in the district or districts to be affected thereby; and at least one such notice shall be posted on or in the immediate vicinity of the polling place in the district.

Philadelphia Board Of Elections Vs Philadelo-RLFIS



1907017100005

BY THE COURT

IN THE COURT OF COMMON PLEAS
CIVIL TRIAL DIVISION OF PHILADELPHIA COUNTY

Filed and Attested by the
Office of Judicial Records
09 JUL 2019 03:44 pm
COURT CLERK

IN RE PETITION OF PHILADELPHIA
COUNTY BOARD OF ELECTIONS

IN THE COURT OF COMMON PLEAS
OF PHILADELPHIA COUNTY

July Term, 2019
NO. 01710

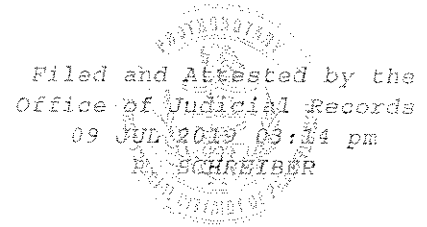
ORDER

AND NOW, this _____ day of _____, 2019, upon consideration of this
Petition, filed on _____ day of _____ 2019, the hearing held on the _____ day
of _____, 2019, where compliance with this Court's Rule to Show Cause having been
established by Affidavit of Service certifying that notice was provided as required, and there
being no objection,

IT IS HEREBY ORDERED, ADJUDGED and DECREED that the Petition to redraw,
revise and modify the Election District boundaries of the 5th, 14th, 15th, 20th, 24th, and 26th
Election Districts of the 8th Ward and create the 31st, 32nd, 33rd, 34th, and 35th Election District of
the 8th Ward, filed by the Philadelphia County Board of Elections, pursuant to the Pennsylvania
Election Code, 25 P.S. § 2704, is GRANTED, and that the boundary modifications and revisions
of the 5th, 14th, 15th, 20th, 24th, and 26th Election Districts of the 8th Ward be modified and revised
and the creation of the 31st, 32nd, 33rd, 34th, and 35th Election District of the 8th Ward be created,
as per the Chart and attachments hereto.

BY THE COURT

CITY OF PHILADELPHIA LAW DEPARTMENT
MARCEL S. PRATT, CITY SOLICITOR
BY: Benjamin H. Field, Divisional Deputy City Solicitor
Attorney I.D. No. 204569
Michael Pfautz, Assistant City Solicitor
Attorney I.D. No. 325323
One Parkway Building, 15th Floor
1515 Arch Street
Philadelphia, PA 19102-1595
Tel (215) 683-5024 and Fax (215) 683-5299



Attorneys for Petitioner

IN RE PETITION OF PHILADELPHIA
COUNTY BOARD OF ELECTIONS

IN THE COURT OF COMMON PLEAS
OF PHILADELPHIA COUNTY

July Term, 2019
NO. 01710

**PETITION TO REDRAW, REVISE AND MODIFY THE ELECTION DISTRICT
BOUNDARIES OF THE 5TH, 14TH, 15TH, 20TH, 24TH, AND 26TH ELECTION DISTRICTS
OF THE 8TH WARD AND CREATE THE 31ST, 32ND, 33RD, 34TH, AND 35TH ELECTION
DISTRICT OF THE 8TH WARD**

Petitioner, the Philadelphia County Board of Elections, by and through its undersigned counsel, in accordance with 25 P.S. § 2704, petitions this Court for an order to redraw, revise, and modify the boundaries of the 5th, 14th, 15th, 20th, 24th, and 26th Election Districts of the 8th Ward and create the 31st, 32nd, 33rd, 34th, and 35th Election Districts of the 8th Ward as set forth below:

1. The 5th, 14th, and 20th Election Districts of the 8th Ward are located at the southwestern part of the 8th Ward.
2. The 15th Election District of the 8th Ward are located at the central and eastern part of the 8th Ward.

3. The 24th Election District of the 8th Ward is located at the northwestern part of the 8th Ward.

4. The 26th Election District of the 8th Ward is located at the northeastern part of the 8th Ward.

5. The 5th Election District of the 8th Ward is bounded by Broad Street, Locust Street a property line of the Academy House Apartments, a private driveway just south of 235 S. 15th Street, 15th Street, Locust Street, 16th Street, Latimer Street, 15th Street, a property line between the Academy House Apartments and 255 S. 15th Street, the rear property line of 15th Street properties, Bach Place, Broad Street, Delancey Street, 15th Street, Spruce Street, 17th Street, and Chestnut Street. *See Exhibit A at 3-4.*

6. The 14th Election District of the 8th Ward is bounded by Broad Street, Lombard Street, 16th Street, Spruce Street, 15th Street, and Delancey Street. *See Exhibit A at 5-6.*

7. The 15th Election District of the 8th Ward is bounded by Broad Street, John F. Kennedy Boulevard, Juniper Street, South Penn Square, Broad Street, Chestnut Street, 22nd Street, Market Street, 20th Street, Ranstead Street, the property line between 1919 and 1921 Chestnut Street, Chestnut Street, the property line between 1911-13 and 1919 Chestnut Street, Ranstead Street, 19th Street, Market Street, 18th Street, Arch Street, 17th Street, Benjamin Franklin Parkway, and Arch Street. *See Exhibit A at 7-8.*

8. The 20th Election District of the 8th Ward is bounded by 15th Street, Latimer Street, 16th Street, and Locust Street. *See Exhibit A at 9-10.*

9. The 24th Election District of the 8th Ward is bounded by 17th Street, Benjamin Franklin Parkway, Race Street, 20th Street, Benjamin Franklin Parkway, Spring Garden Street, 20th Street, Hamilton Street, 19th Street, and Interstate 676. *See Exhibit A at 11-12.*

10. The 26th Election District of the 8th Ward is bounded by Broad Street, Spring Garden Street, 17th Street, and Fairmount Avenue. *See* Exhibit A at 13-14.
11. During the 2019 Municipal Primary and Special Election, the 5th Election District of the 8th Ward voted at the Land Title Building located at 100 South Broad Street.
12. During the 2019 Municipal Primary and Special Election, the 14th Election District of the 8th Ward voted at Health Center District 1 located at Broad and Lombard Streets.
13. During the 2019 Municipal Primary and Special Election, the 15th Election District of the 8th Ward voted at the Phoenix Apartments located at 1600 Arch Street.
14. During the 2019 Municipal Primary and Special Election, the 20th Election District of the 8th Ward voted at the Tenth Presbyterian Church located at 17th and Spruce Streets.
15. During the 2019 Municipal Primary and Special Election, the 24th Election District of the 8th Ward voted at the Parkway House located at 2201 Pennsylvania Avenue.
16. During the 2019 Municipal Primary and Special Election, the 26th Election District of the 8th Ward voted at Benjamin Franklin High School located at Broad and Green Streets.
17. An influx of recent residential construction in these election districts (excluding the 20th Election District; electors will be added to these election districts with this proposal) have created an unusually high number of registered electors.
18. The 5th Election District of the 8th Ward has 1,742 electors.
19. The 14th Election District of the 8th Ward has 1,457 electors.
20. The 15th Election District of the 8th Ward has 1,744 electors.
21. The 20th Election District of the 8th Ward has 779 electors.

22. The 24th Election District of the 8th Ward has 1,670 electors.

23. The 26th Election District of the 8th Ward has 1,711 electors.

24. This high number of electors creates long waiting times at the polls on Election Day, an unnecessary burden to the electors.

25. According to the Pennsylvania Election Code, “[t]he county board of elections may . . . petition the court for the division or redivision of any . . . ward or election district into two or more election districts, or for the alteration of the bounds of any election district, or for the formation of one or more election districts out of two or more existing election districts, or parts thereof.” 25 P.S. § 2704.

26. The petition must include “a map and a verbal description of the boundaries of the proposed new election districts” and “a certification of the number of electors registered in each of the resulting election districts for the immediately preceding general or municipal election.” *Id.*

27. “Upon the presentation of any such petition by the county board, the court may make such order for the division, redivision, alteration, formation or consolidation of election districts, as will, in its opinion, promote the convenience of electors and the public interests: Provided [sufficient notice is provided].” *Id.*

28. Dividing the aforementioned election districts will alleviate unnecessary burdens for these electors.

29. The proposed modification for the 5th Election District of the 8th Ward will consist of the following new boundaries: Broad Street, Locust Street a property line of the Academy House Apartments, a private driveway just south of 235 S. 15th Street, 15th Street, Locust Street,

16th Street, Spruce Street, 17th Street, Sansom Street, 16th Street, and Walnut Street. *See Exhibits B, C.*

30. The proposed modification for the 14th Election District of the 8th Ward will consist of the following new boundaries: 15th Street, Lombard Street, 16th Street, Spruce Street, Hicks Street, and Pine Street. *See Exhibits B, D.*

31. The proposed modification for the 15th Election District of the 8th Ward will consist of the following new boundaries: Broad Street, John F. Kennedy Boulevard, Juniper Street, South Penn Square, Broad Street, Chestnut Street, a property line between 1911-13 and 1919 Chestnut Street, Ranstead Street, 19th Street, Market Street, 18th Street, Arch Street, 17th Street, Benjamin Franklin Parkway, and Arch Street. *See Exhibits E, F.*

32. The proposed modification for the 20th Election District of the 8th Ward will consist of the following new boundaries: 15th Street, Spruce Street, 16th Street, and Locust Street. *See Exhibits B, G.*

33. The proposed modification for the 24th Election District of the 8th Ward will consist of the following new boundaries: 20th Street, Pennsylvania Avenue, 21st Street, and Spring Garden Street. *See Exhibits H, I.*

34. The proposed modification for the 26th Election District of the 8th Ward will consist of the following new boundaries: Green Street, 17th Street, Fairmount Avenue, and 15th Street. *See Exhibits J, K.*

35. The proposed creation of the 31st Election District of the 8th Ward will consist of the following new boundaries: 17th Street, Benjamin Franklin Parkway, Race Street, 20th Street, Benjamin Franklin Parkway, Spring Garden Street, 21st Street, Pennsylvania Avenue, 20th Street, Hamilton Street, 19th Street, and Interstate 676 (Vine Street Expressway). *See Exhibits H, L*

36. The proposed creation of the 32nd Election District of the 8th Ward will consist of the following new boundaries: Spring Garden Street, 17th Street, Green Street, 15th Street, Fairmount Avenue, and Broad Street. *See* Exhibits J, M.

37. The proposed creation of the 33rd Election District of the 8th Ward will consist of the following new boundaries: a property line between 1919 and 1921 Chestnut Street, Chestnut Street, 22nd Street, and Market Street, 20th Street, and Ranstead Street. *See* Exhibits F, N.

38. The proposed creation of the 34th Election District of the 8th Ward will consist of the following new boundaries: Broad Street, Walnut Street, 16th Street, Sansom Street, 17th Street, and Chestnut Street. *See* Exhibits B, O.

39. The proposed creation of the 35th Election District of the 8th Ward will consist of the following new boundaries: Broad Street, Lombard Street, 15th Street, Pine Street, Hicks Street, Spruce Street, 15th Street, the property lines of the Academy House Apartments, and Bach Place. *See* Exhibits B, P.

40. The tentative polling place location for the electors of the proposed 5th Election District of the 8th Ward will be the Kimmel Center located at 300 S. Broad Street.

41. The tentative polling place location for the electors of the proposed 14th and 35th Election Districts of the 8th Ward will be Peirce College located at 1420 Pine Street.

42. The tentative polling place location for the electors of the proposed 15th Election District of the 8th Ward will be the Phoenix Apartments located at 1600 Arch Street.

43. The tentative polling place location for the electors of the proposed 20th Election District of the 8th Ward will be the Kimmel Center located at 300 S. Broad Street.

44. The tentative polling place location for the electors of the proposed 24th Election District of the 8th Ward will be the City View Condominiums located at 2001 Hamilton Street.

45. The tentative polling place location for the electors of the proposed 26th and 32nd Election Districts of the 8th Ward will be Benjamin Franklin High School located at Broad and Green Streets.

46. The tentative polling place location for the electors of the proposed 31st Election District of the 8th Ward will be the Parkway House located at 2201 Pennsylvania Avenue.

47. The tentative polling place location for the electors of the proposed 33rd Election District of the 8th Ward will be the Greenfield School located at 22nd and Chestnut Streets.

48. The tentative polling place location for the electors of the proposed 34th Election District of the 8th Ward will be the Land Title Building located at 100 S. Broad Street.

WHEREFORE, the Philadelphia County Board of Elections request the Court to revise, redraw, and modify the boundaries of the 5th, 14th, 15th, 20th, 24th, and 26th Election Districts of the 8th Ward and create the 31st, 32nd, 33rd, 34th, and 35th Election Districts of the 8th Ward, according to the attached plan.

CITY OF PHILADELPHIA
LAW DEPARTMENT

DATED: July 9, 2019

BY: /s/ Benjamin H. Field
Divisional Deputy City Solicitor
Attorney I.D. No. 204569
Michael Pfautz, Assistant City Solicitor
Attorney I.D. No. 325323
1515 Arch Street, 15th Floor
Philadelphia, PA 19102
Phone: (215) 683-5024
Fax: (215) 683-5069
Benjamin.Field@phila.gov
Attorneys for Petitioner


VERIFICATION

I, Garrett C. Dietz, for the Office of the City Commissioners, verify that the facts as set forth above are true and correct to the best of my knowledge, information and belief.

I understand that false statements made therein are subject to the penalties of 18 Pa. C.S. § 4904, relating to unsworn falsification to authorities.

DATED: July 5, 2019

BY: _____


Garrett C. Dietz
Election Compliance Specialist
Office of the City Commissioners

Filed and Attested by the
Office of Judicial Records
09 JUL 2019 03:54 pm

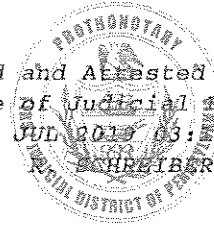
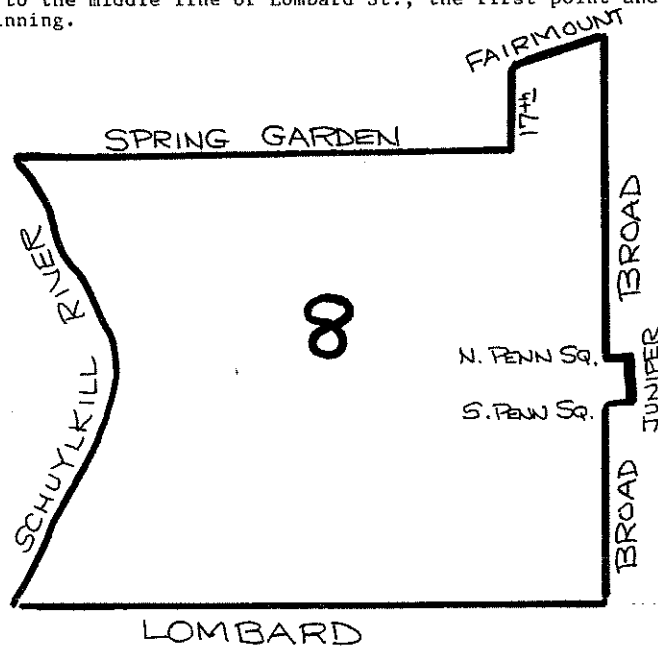


EXHIBIT "A"

WARD 8

The present 8th Ward of Philadelphia County is bounded and described as follows:

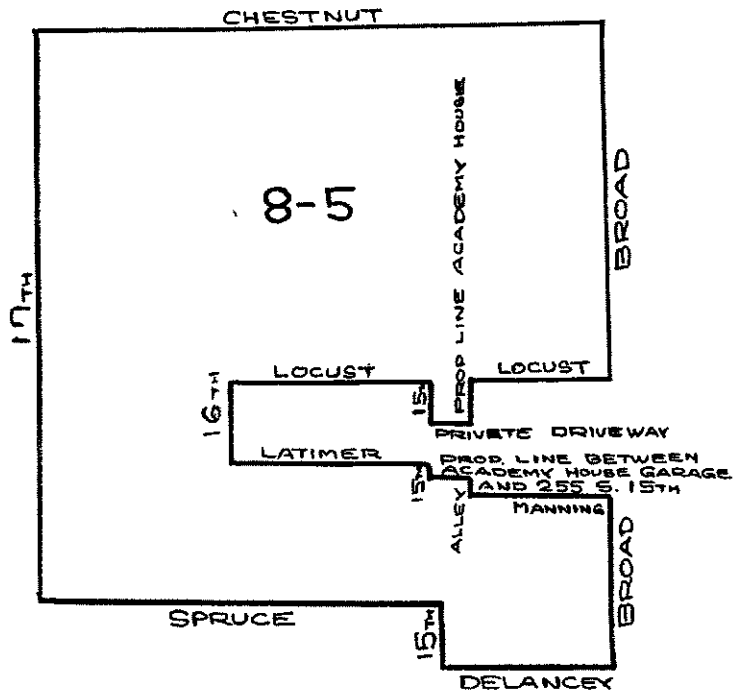
BEGINNING at the intersection of the middle line of Broad St. and the middle line of Lombard St.; thence westward along the middle line of Lombard St. to the middle line of the Schuylkill River; thence northeastward and northwestward along the middle line of the Schuylkill River to the middle line of Spring Garden St.; thence eastward along the middle line of Spring Garden St. to the middle line of 17th St.; thence northward along the middle line of 17th St. to the middle line of Fairmount Ave.; thence northeastward along the middle line of Fairmount Ave. to the middle line of Broad St.; thence southward along the middle line of Broad St. to the middle line of North Penn Square; thence eastward along the middle line of North Penn Sq. to the middle line of Juniper St.; thence southward along the middle line of Juniper St. to the middle line of South Penn Square; thence westward along the middle of South Penn Sq. to the middle line of Broad St.; thence southward along the middle line of Broad St. to the middle line of Lombard St., the first point and beginning.



The new 5th Election District of the 8th Ward is bounded and described as follows:

BEGINNING at the intersection of the middle line of Broad St. and the middle line of Chestnut St.; thence southward along the middle line of Broad St. to the middle line of Locust St.; thence westward along the middle line of Locust St. to the middle of the property line of the Academy House Apts.; thence southward, running parallel to 15th St. to the middle line of a private driveway, just south of 215 S. 15th St.; thence westward along the middle line of the private driveway to the middle line of 15th St.; thence northward along the middle line of 15th St. to the middle line of Locust St.; thence westward along the middle line of Locust St. to the middle line of 16th St.; thence southward along the middle line of 16th St. to the middle line of Latimer St.; thence eastward along the middle line of Latimer St. to the middle line of 15th St.; thence southward along the middle line of 15th St. to the middle of a property line between the Academy House Apt. Garage entrance and the premises of 255 S. 15th St.; thence eastward along the said property line to the middle line of an alleyway to the rear of the properties of 15th St.; thence southward along the middle line of the alleyway running parallel to 15th St. to the middle line of Manning St.; thence eastward along the middle line of Manning St. to the middle line of Broad St.; thence southward along the middle line of Broad St. to the middle line of Delancey St.; thence westward along the middle line of Delancey St. to the middle line of 15th St.; thence northward along the middle line of 15th St. to the middle line of Spruce St.; thence westward along the middle line of Spruce St. to the middle line of 17th St.; thence northward along the middle line of 17th St. to the middle line of Chestnut St.; thence eastward along the middle line of Chestnut St. to the middle line of Broad St. to the first point and beginning.

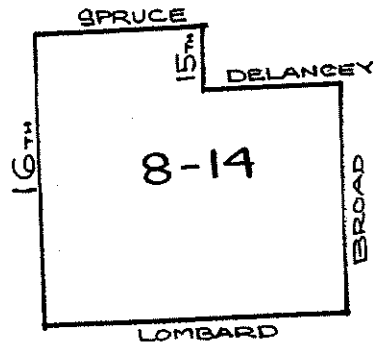
The new 5th Election District of the 8th Ward will have approximately 560 electors.



The new 14th. Election District of the 8th. Ward is bounded and described as follows:

BEGINNING at the intersection of the middle line of Broad St. and the middle line of Lombard St., thence westward along the middle line of Lombard St. to the middle line of 16th. St., thence northward along the middle line of 16th. St. to the middle line of Spruce St.;, thence eastward along the middle line of Spruce St. to the middle line of 15th. St., thence southward along the middle line of 15th. St. to the middle line of Delancey St., thence eastward along the middle line of Delancey St. to the middle line of Broad St., thence southward along the middle line of Broad St. to the middle line of Lombard St. to the first point and beginning.

The new 14th. Election District of the 8th. Ward will have approximately 617 electors.

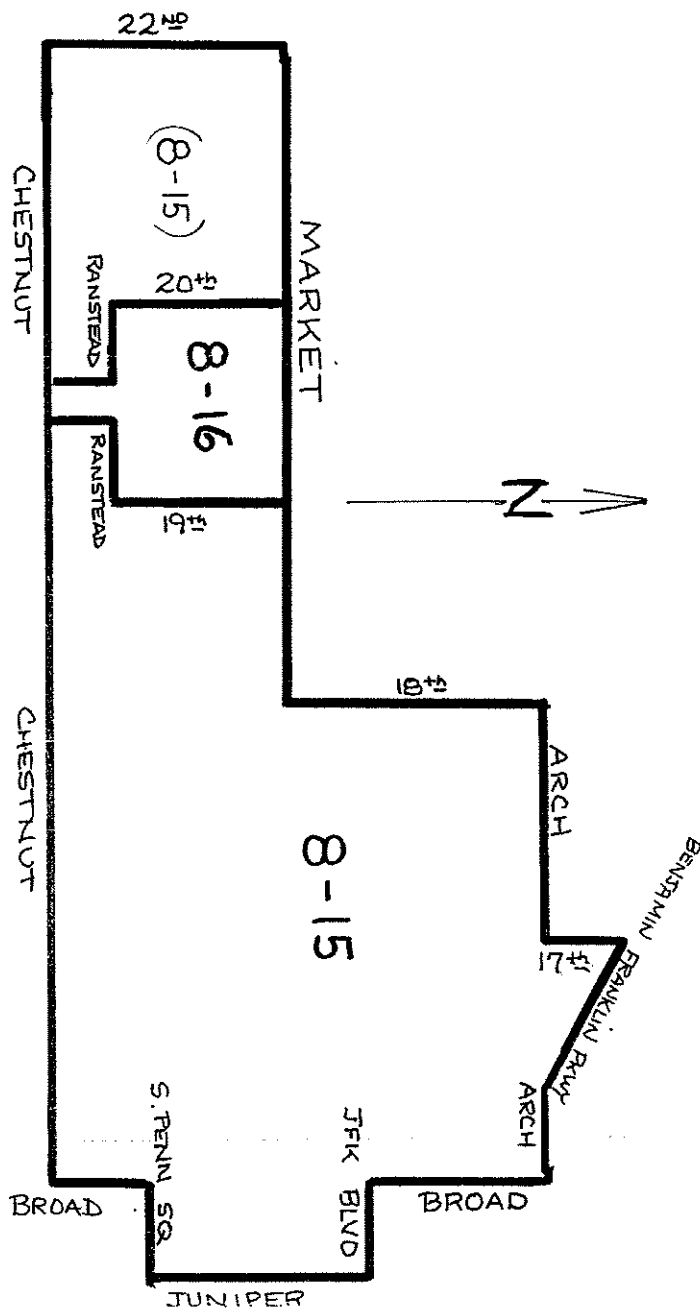


The new 15th division of the 8th Ward is bounded and described as follows:

Beginning at the intersection of the middle line of Broad Street and the middle line of Chestnut Street; thence westward along the middle line of Chestnut Street to the middle of the property line between 1917 and 1919 Chestnut Street; thence northward along the middle of said property line to the middle line of Ranstead Street; thence eastward along the middle line of Ranstead Street to the middle line of 19th Street; thence northward along the middle line of 19th Street to the middle line of Market Street; thence westward along the middle line of Market Street to the middle line of 20th Street; thence southward along the middle line of 20th Street to the middle line of Ranstead Street; thence eastward along the middle line of Ranstead Street to the middle of the property line between 1919 and 1921 Chestnut Street; thence southward along the middle of said property line to the middle line of Chestnut Street; thence westward along the middle line of Chestnut Street to the middle line of 22nd Street; thence northward along the middle line of 22nd Street to the middle line of Market Street; thence eastward along the middle line of Market Street, to the middle line of 18th Street; thence northward along the middle line of 18th Street to the middle line of Arch Street; thence eastward along the middle line of Arch Street to the middle line of 17th Street; thence northward along the middle line of 17th Street to the middle line of Benjamin Franklin Parkway; thence southeastward along the middle line of Benjamin Franklin Parkway to the middle line of Arch Street; thence eastward along the middle line of Arch Street to the middle line of Broad Street; thence southward along the middle line of Broad Street to the middle line of John F. Kennedy Blvd; thence eastward along the middle line of John F. Kennedy Blvd. to the middle line of Juniper Street; thence southward along the middle line of Juniper Street to the middle line of South Penn Square; thence westward along the middle line of South Penn Square to the middle line of Broad Street; thence southward along the middle line of Broad Street to the middle line of Chestnut Street the first and beginning point.

The new 15th division of the 8th Ward will have approximately 556 electors.

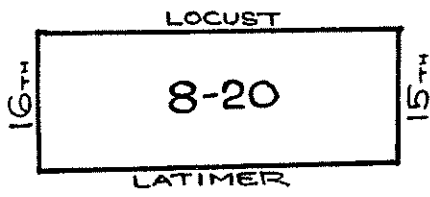
556



The new 20th. Election District of the 8th. Ward is bounded and described as follows:

BEGINNING at the intersection of the middle line of 15th. St. and the middle line of Locust St., thence westward along the middle line of Locust St. to the middle line of 16th. St., thence southward along the middle line of 16th. St. to the middle line of Latimer St., thence eastward along the middle line of Latimer St. to the middle line of 15th. St., thence northward along the middle line of 15th. St. to the middle line of Locust St. to the first point and beginning.

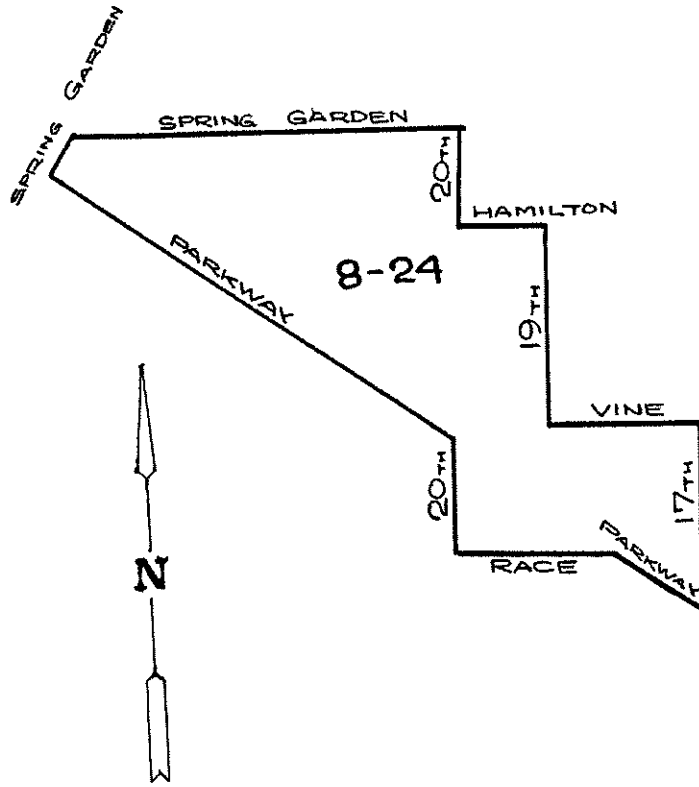
The new 20th. Election District of the 8th. Ward will have approximately 642 electors.



The new 24th. Election District of the 8th. Ward is bounded and described as follows:

BEGINNING at the intersection of the middle line of 20th. St. and the middle line of Race St., thence northward along the middle line of 20th. St. to the middle line of the Benjamin Franklin Parkway thence northwestward along the middle line of the Benjamin Franklin Parkway to the middle line of Spring Garden St., thence eastward along the middle line of Spring Garden St. to the middle line of 20th. St., thence southward along the middle line of 20th. St. to the middle line of Hamilton St., thence eastward along the middle line of Hamilton St. to the middle line of 19th. St., thence southward along the middle line of 19th. St. to the middle line of Vine St., thence eastward along the middle line of Vine St. to the middle line of 17th. St., thence southward along the middle line of 17th. St. to the middle line of the Benjamin Franklin Parkway thence northwestward along the middle line of the Benjamin Franklin Parkway to the middle line of Race St., thence westward along the middle line of Race St. to the middle line of 20th. St. to the first point and beginning.

The new 24th. Election District of the 8th. Ward will have approximately 630 electors.



The present 26th Election District of the 8th Ward is bounded and described as follows:

BEGINNING at the intersection of the middle line of Broad St. and the middle line of Spring Garden St.; thence westward along the middle line of Spring Garden St. to the middle line of 17th St.; thence northward along the middle line of 17th St. to the middle line of Fairmount Ave.; thence eastward along the middle line of Fairmount Ave. to the middle line of Broad St.; thence southward along the middle line of Broad St. to the first point and beginning.

The present 26th Election District of the 8th Ward will have approximately 687 electors.

NO CHANGE

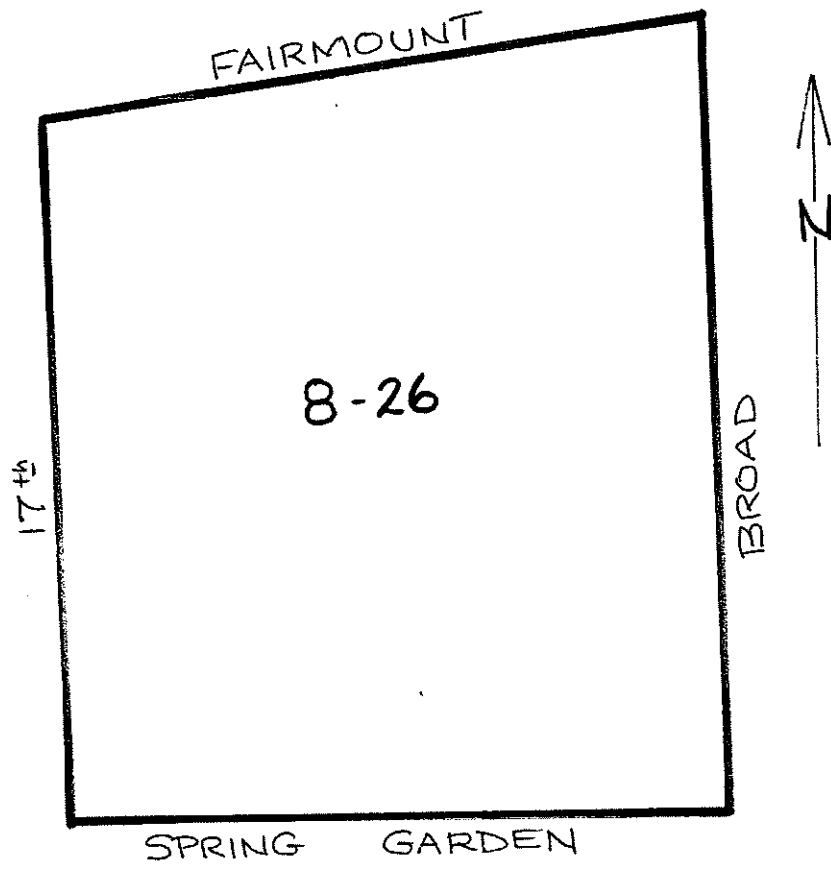


EXHIBIT “B”

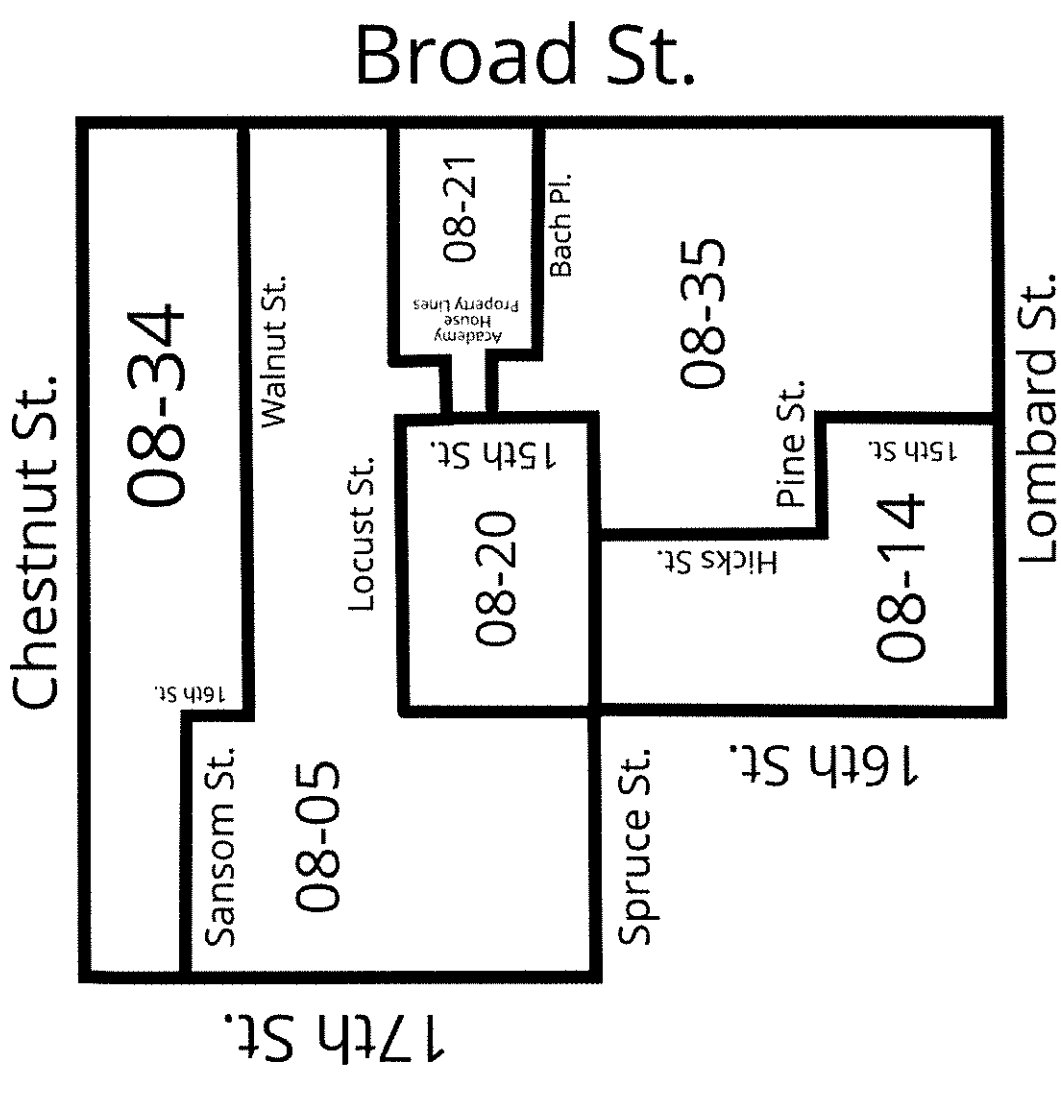


EXHIBIT “C”

The new 5th Election District of the 8th Ward is bounded and described as follows:

Beginning at the intersection of the middle line of Broad Street and the middle line of Locust Street; thence westward along the middle line of Locust Street to the property line to the east of 235 S. 15th Street and west of the Academy House Apartments; thence southward along property line to the east of 235 S. 15th Street and west of the Academy House Apartments to the property line south of 235 S. 15th Street and north of the Academy House Apartments; thence westward along the property line south of 235 S. 15th Street and north of the Academy House Apartments to 15th Street; thence northward along the middle line of 15th Street to the middle line of Locust Street; thence westward along the middle line of Locust Street to the middle line of 16th Street; thence southward along the middle line of 16th Street to the middle line of Spruce Street; thence westward along the middle line of Spruce Street to the middle line of 17th Street; thence northward along the middle line of 17th Street to the middle line of Sansom Street; thence eastward along the middle line of Sansom Street to the middle line of 16th Street; thence southward along the middle line of 16th Street to the middle line of Walnut Street; thence eastward along the middle line of Walnut Street to the middle line of Broad Street; thence southward along the middle line of Broad Street to the middle line of Locust Street, the first point and beginning.

PROPOSED WRITTEN DESCRIPTION

EXHIBIT “D”

The new 14th Election District of the 8th Ward is bounded and described as follows:

Beginning at the intersection of the middle line of 15th Street and the middle line of Lombard Street; thence westward along the middle line of Lombard Street to the middle line of 16th Street; thence northward along the middle line of 16th Street to the middle line of Spruce Street; thence eastward along the middle line of Spruce Street to the middle line of Hicks Street; thence southward along the middle line of Hicks Street to the middle line of Pine Street; thence eastward along the middle line of Pine Street to the middle line of 15th Street; thence southward along the middle line of 15th Street to the middle line of Lombard Street, the first point and beginning.

PROPOSED WRITTEN DESCRIPTION

EXHIBIT “E”

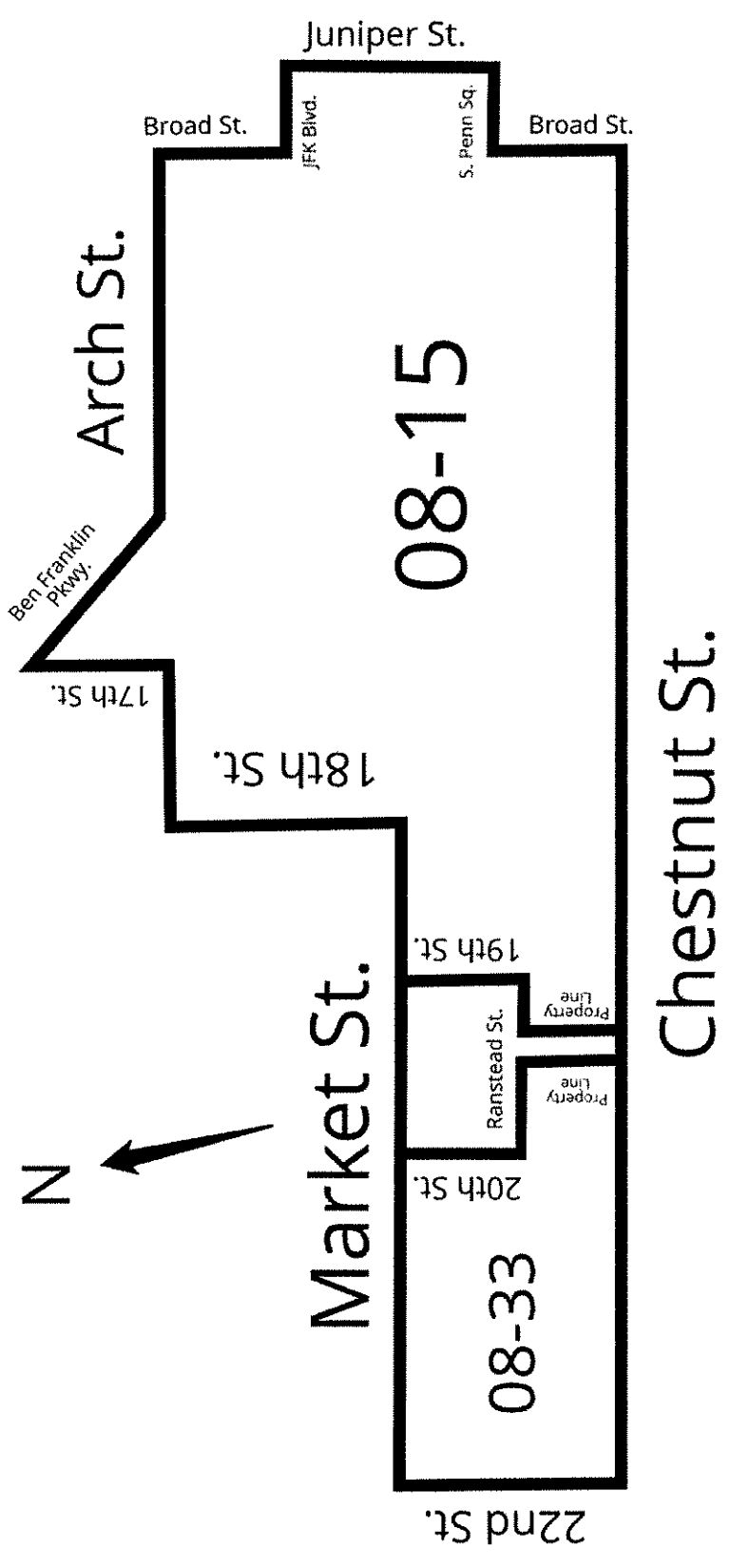


EXHIBIT “F”

The new 15th Election District of the 8th Ward is bounded and described as follows:

Beginning at the intersection of the middle line of Broad Street and the middle line of Chestnut Street; thence westward along the middle line of Chestnut Street to a property line between 1911-13 and 1919 Chestnut Street; thence northward along said property line to the middle line of Ranstead Street; thence eastward along the middle line of Ranstead Street to the middle line of 19th Street; thence northward along the middle line of 19th Street to the middle line of Market Street; thence eastward along the middle line of Market Street to the middle line of 18th Street; thence northward along the middle line of 18th Street to the middle line of Arch Street; thence eastward along the middle line of Arch Street to the middle line of 17th Street; thence northward along the middle line of 17th Street to the middle line of Benjamin Franklin Parkway; thence southeastward along the middle line of Benjamin Franklin Parkway to the middle line of Arch Street; thence eastward along the middle line of Arch Street to the middle line of Broad Street; thence southward along the middle line of Broad Street to the middle line of John F. Kennedy Boulevard; thence eastward along the middle line of John F. Kennedy Boulevard to the middle line of Juniper Street; thence southward along the middle line of Juniper Street to the middle line of South Penn Square; thence westward along the middle line of South Penn Square to the middle line of Broad Street; thence southward along the middle line of Broad Street to the middle line of Chestnut Street, the first point and beginning.

PROPOSED WRITTEN DESCRIPTION

EXHIBIT “G”

The new 20th Election District of the 8th Ward is bounded and described as follows:

Beginning at the intersection of the middle line of 15th Street and the middle line of Spruce Street, thence westward along the middle line of Spruce Street to the middle line of 16th Street, thence northward along the middle line of 16th Street to the middle line of Locust Street; thence eastward along the middle of Locust Street to the middle line of 15th Street; thence southward along the middle line of 15th Street to the middle line of Spruce Street, the first point and beginning.

PROPOSED WRITTEN DESCRIPTION

EXHIBIT “H”

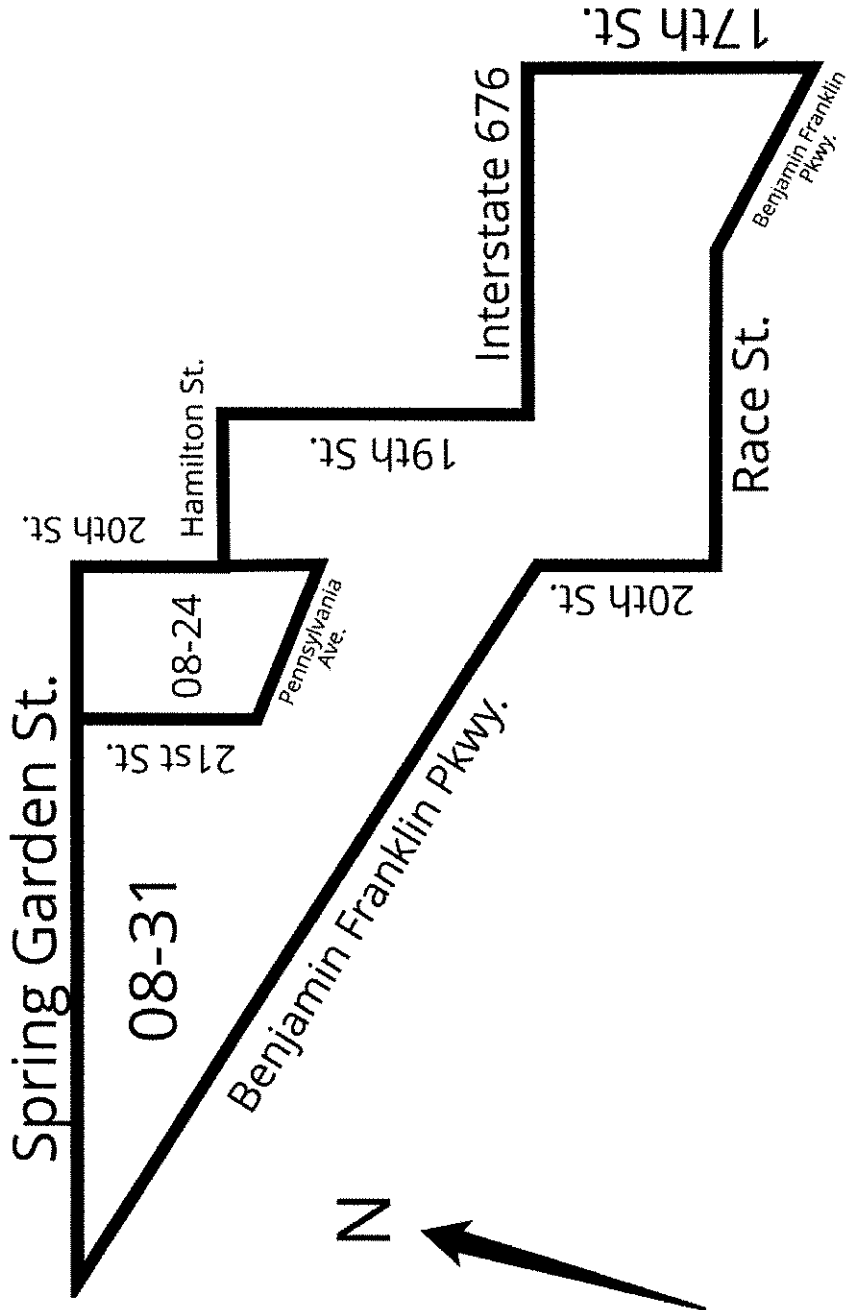


EXHIBIT “I”

The new 24th Election District of the 8th Ward is bounded and described as follows:

Beginning at the intersection of the middle line of 20th Street and the middle line of Pennsylvania Avenue; thence northwestward along the middle line of Pennsylvania Avenue to the middle line of 21st Street; thence northward along the middle line of 21st Street to the middle line of Spring Garden Street; thence eastward along the middle line of Spring Garden Street to the middle line of 20th Street; thence southward along the middle line of 20th Street to the middle line of Pennsylvania Avenue, the first point and beginning.

PROPOSED WRITTEN DESCRIPTION

EXHIBIT “J”

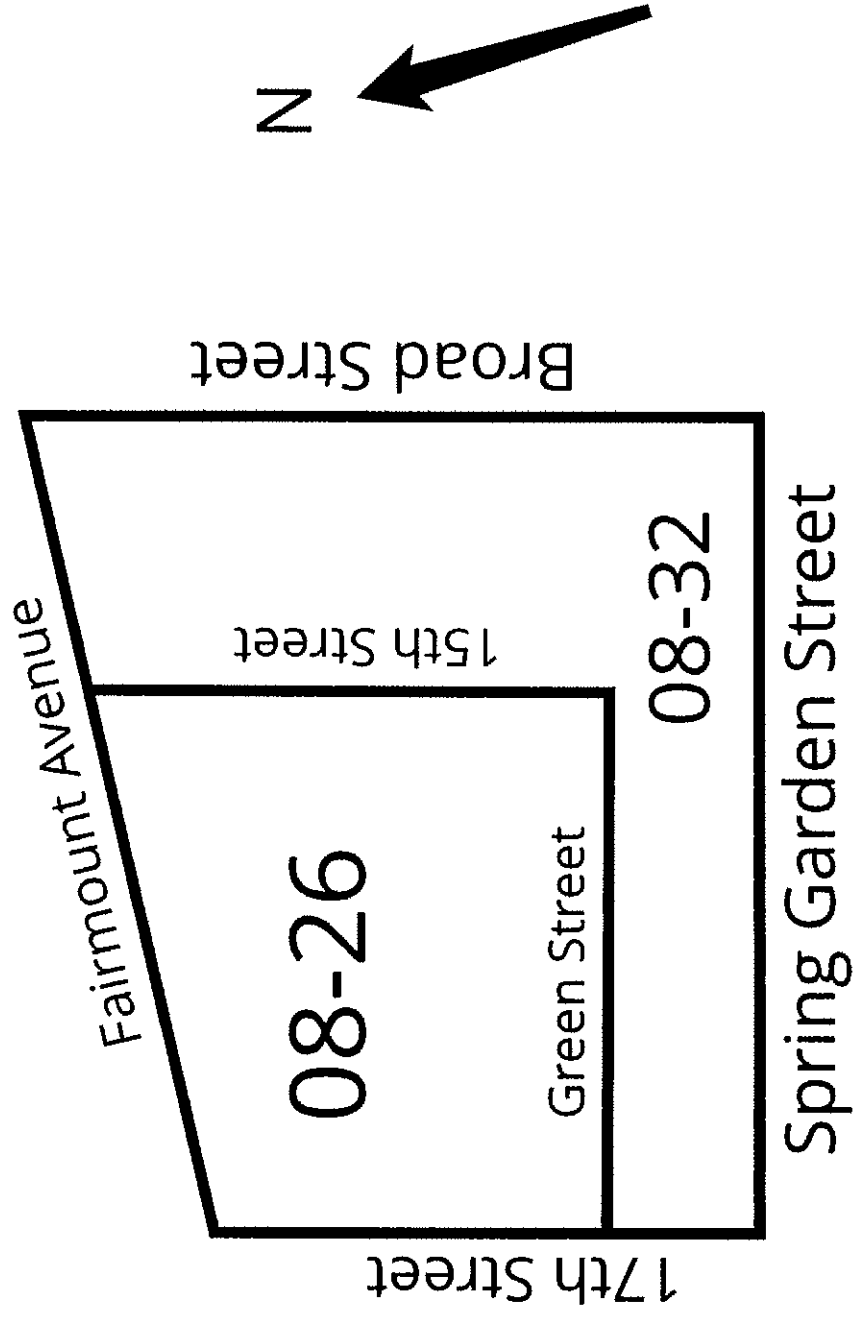


EXHIBIT “K”

The new 26th Election District of the 8th Ward is bounded and described as follows:

Beginning at the intersection of the middle line of 15th Street and the middle line of Green Street; thence westward along the middle line of Green Street to the middle line of 17th Street; thence northward along the middle line of 17th Street to the middle line of Fairmount Avenue; thence northeastward along the middle line of Fairmount Avenue to the middle line of 15th Street; thence southward along the middle line of 15th Street to the middle line of Green Street, the first point and beginning.

PROPOSED WRITTEN DESCRIPTION

EXHIBIT “L”

The new 31st Election District of the 8th Ward is bounded and described as follows:

Beginning at the intersection of the middle line of 17th Street and the middle line of Benjamin Franklin Parkway; thence northwestward along the middle line of Benjamin Franklin Parkway to the middle line of Race Street; thence westward along the middle line of Race Street to the middle line of 20th Street; thence northward along the middle line of 20th Street to the middle line of Benjamin Franklin Parkway; thence northwestward along the middle line of Benjamin Franklin Parkway to the middle line of Spring Garden Street; thence eastward along the middle line of Spring Garden Street to the middle line of 21st Street; thence southward along the middle line of 21st Street to the middle line of Pennsylvania Avenue; thence southeastward along the middle line of Pennsylvania Avenue to the middle line of 20th Street; thence northward along the middle line of 20th Street to the middle line of Hamilton Street; thence eastward along the middle line of Hamilton Street to the middle line of 19th Street; thence southward along the middle line of 19th Street to the middle line of Interstate 676; thence eastward along the middle line of Interstate 676 to the middle line of 17th Street; thence southward along the middle line of 17th Street to the middle line of Benjamin Franklin Parkway, the first point and beginning.

PROPOSED WRITTEN DESCRIPTION

EXHIBIT “M”

The new 32nd Election District of the 8th Ward is bounded and described as follows:

Beginning at the intersection of the middle line of Broad Street and the middle line of Spring Garden Street; thence westward along the middle line of Spring Garden Street to the middle line of 17th Street; thence northward along the middle line of 17th Street to the middle line of Green Street; thence eastward along the middle line of Green Street to the middle line of 15th Street; thence northward along the middle line of 15th Street to the middle line of Fairmount Avenue; thence northeastward along the middle line of Fairmount Avenue to the middle line of Broad Street; thence southward along the middle line of Broad Street to the middle line of Spring Garden Street, the first point and beginning.

PROPOSED WRITTEN DESCRIPTION

EXHIBIT “N”

The new 33rd Election District of the 8th Ward is bounded and described as follows:

Beginning at the intersection of a property line between 1919 and 1921 Chestnut Street and Chestnut Street; thence westward along the middle line of Chestnut Street to the middle line of 22nd Street; thence northward along the middle line of 22nd Street to the middle line of Market Street; thence eastward along the middle line of Market Street to the middle line of 20th Street; thence southward along the middle line of 20th Street to the middle line of Ranstead Street; thence eastward along the middle line of Ranstead Street to a property line between 1919 and 1921 Chestnut Street; thence southward along said property line to the middle line of Chestnut Street, the first point and beginning.

PROPOSED WRITTEN DESCRIPTION

EXHIBIT “O”

The new 34th Election District of the 8th Ward is bounded and described as follows:

Beginning at the intersection of the middle line of Broad Street and the middle line of Walnut Street; thence westward along the middle line of Walnut Street to the middle line of 16th Street; thence northward along the middle line of 16th Street to the middle line of Sansom Street; thence westward along the middle line of Sansom Street to the middle line of 17th Street; thence northward along the middle line of 17th Street to the middle line of Chestnut Street; thence eastward along the middle line of Chestnut Street to the middle line of Broad Street; thence southward along the middle line of Broad Street to the middle line of Walnut Street, the first point and beginning.

PROPOSED WRITTEN DESCRIPTION

EXHIBIT “P”

The new 35th Election District of the 8th Ward is bounded and described as follows:

Beginning at the intersection of the middle line of Broad Street and the middle line of Lombard Street; thence westward along the middle line of Lombard Street to the middle line of 15th Street; thence northward along the middle line of 15th Street to the middle line of Pine Street; thence westward along the middle line of Pine Street to the middle line of Hicks Street; thence northward along the middle line of Hicks Street to the middle line of Spruce Street; thence eastward along the middle line of Spruce Street to the middle line of 15th Street; thence northward along the middle line of 15th Street to the property line between the Academy House Apartments and 255 S. 15th Street; thence eastward along the property line between the Academy House Apartments and 255 S. 15th Street to the property line between the Academy House Apartments and the rear of the 15th Street properties; thence southward along the property line between the Academy House Apartments and the rear of the 15th Street properties to the middle line of Bach Place (formerly Manning Street); thence eastward along the middle line of Bach Place to the middle line of Broad Street; thence southward along the middle line of Broad Street to the middle line of Lombard Street, the first point and beginning.

PROPOSED WRITTEN DESCRIPTION